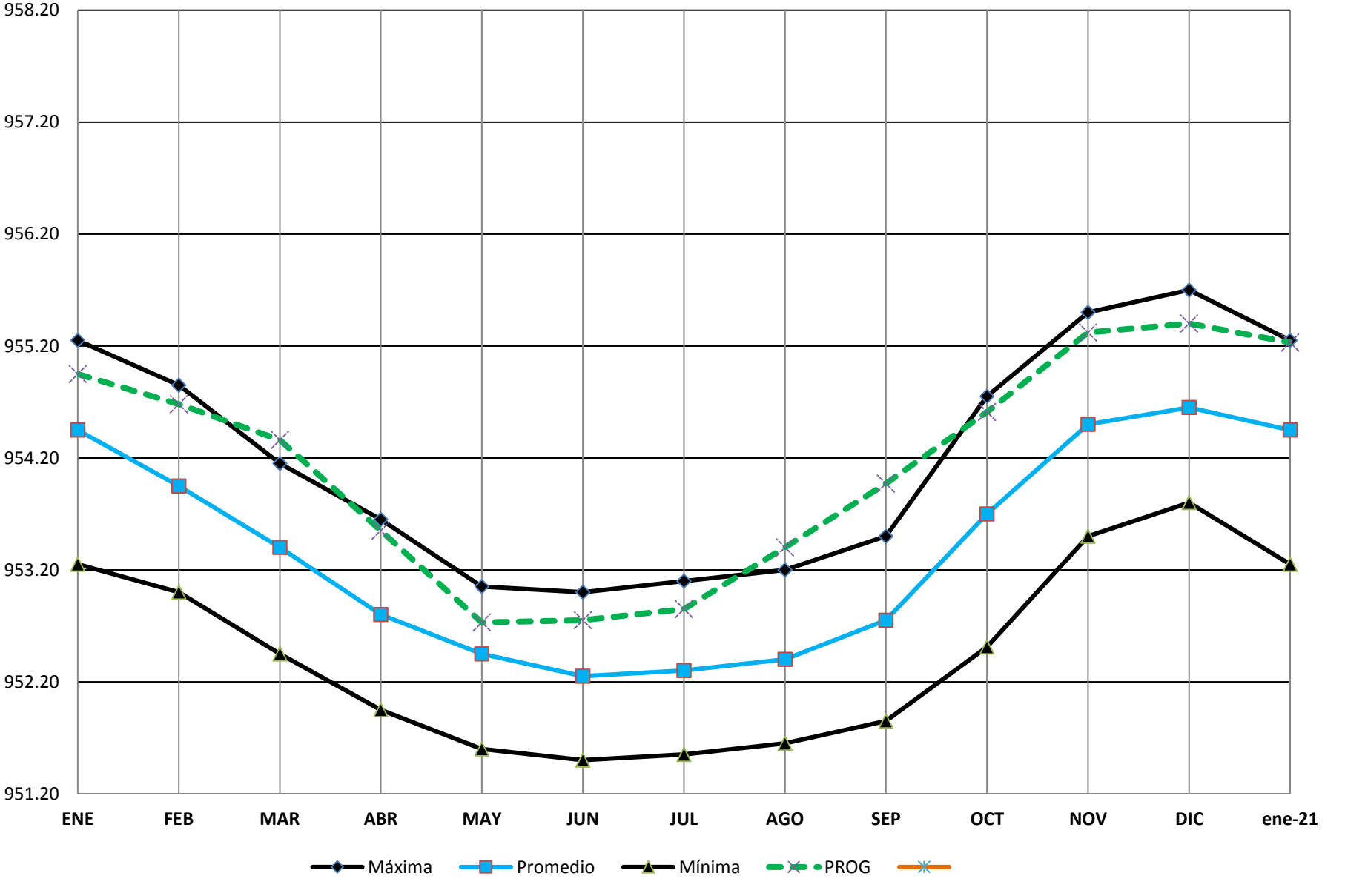


Curva de Niveles Iniciales de Apanás - 2020



EMPRESA NACIONAL DE TRANSMISIÓN ELÉCTRICA (ENATREL)

Generación P.C.A. - Balance Hidrológico de Apanás

Periodo: Enero - Diciembre, 2020

PERIODO	GENERACIÓN GWh	CONSUMO M.MCu.	NIV. INIC. MSNM	VOL. INIC. M.MCu.	APORTE PROG. (M.MCu.)			APORTE PROM. HIST. (M.MCu.)			NIV. FIN. MSNM	VOL. FINAL M.MCu.	
					PROPIO neto	BOMBEO	Vol. bypass	TOTAL	PROPIO	BOMBEO			TOTAL
ENE	10.5	17.5	954.95	360.93	2.0	2.43	0.00	4.4	10.57	4.22	14.8	954.68	347.64
FEB	8.1	13.5	954.68	347.64	(2.0)	1.35	0.00	(0.6)	5.40	2.54	7.9	954.36	333.08
MAR	18.7	31.2	954.36	333.08	(3.0)	0.00	0.00	(3.0)	2.72	1.68	4.4	953.55	298.75
ABR	16.5	27.5	953.55	298.75	(3.9)	0.00	0.00	(3.9)	2.07	1.18	3.2	952.73	267.00
MAY	4.5	7.5	952.73	267.00	7.3	0.94	0.00	8.2	11.81	1.54	13.3	952.75	267.73
JUN	12.9	21.5	952.75	267.73	22.2	3.24	0.00	25.4	37.85	5.34	43.2	952.85	271.36
JUL	19.6	32.7	952.85	271.36	47.4	6.70	0.00	54.1	46.43	8.32	54.8	953.40	292.76
AGO	16.7	27.8	953.40	292.76	43.9	6.70	0.00	50.6	54.14	8.36	62.5	953.97	315.50
SEP	20.3	33.8	953.97	315.50	56.6	6.48	0.00	63.1	61.30	8.71	70.0	954.61	344.80
OCT	19.1	31.9	954.61	344.46	59.6	6.70	0.00	66.3	65.47	7.80	73.3	955.32	378.91
NOV	19.8	33.0	955.32	378.69	30.1	6.82	0.00	36.9	30.13	6.82	37.0	955.40	382.65
DIC	16.1	26.9	955.40	382.56	13.6	5.20	0.00	18.8	15.04	5.20	20.2	955.23	374.42
2020	182.9	304.8	954.950	360.9	273.8	46.5	0.0	320.4	342.9	61.7	404.6	955.230	374.42

M.M.C = Millones de Metros Cúbicos o Hm3
diciembre 18, 2019

Proyecciones de Precios de los combustibles para generación. CNDC

Programado	2020											
	Ene	Feb	Mar	Abr	May	Jun	Jul	Ago	Sep	Oct	Nov	Dic
Bunker	60.02	57.90	57.02	57.36	54.29	53.02	50.05	49.24	50.63	43.13	51.04	58.91
Diesel	78.11	79.69	80.54	78.87	78.00	76.03	75.34	75.72	76.16	77.83	78.41	78.52

Fuente Energy Information Administration/Escenario Base/Short-Term Energy Outlook 2019

MES																						Total			
	ENEL-BUNKER			ALBANISA-BUNKER										ALBANISA-DIESEL			GEOA-BUNKER			PMN	CEN	TPC	EEC y EEC20	BUNKER	DIESEL
	PMG4	PMG5	Sub-Total	PCG1	PCG2	PCG3	PCG4	PCG5	PCG6	PCG7	PCG8	PCG9	Sub-Total	PHC1	PHC2	Sub-Total	PNI1	PNI2	Sub-Total						
ENE	0.0	0.0	0.0	0.0	0.0	0.0	0.0	0.0	0.4	0.0	0.0	0.0	0.4	0.0	0.0	0.0	34.9	0.0	34.9	40.0	0.1	15.3	20.9	112	0.00
FEB	0.0	0.0	0.0	0.0	0.0	0.0	0.0	0.0	0.1	0.0	0.0	0.0	0.1	0.0	0.0	0.0	31.5	0.0	31.5	26.3	2.5	8.8	24.5	94	0.00
MAR	0.0	0.0	0.0	0.0	0.0	0.0	0.0	0.0	0.1	0.0	0.0	0.0	0.1	0.0	0.0	0.0	0.0	36.1	36.1	30.0	3.9	18.2	18.2	107	0.00
ABR	0.0	0.0	0.0	0.0	0.0	0.0	0.0	0.0	1.5	0.4	0.0	0.0	1.9	0.0	0.0	0.0	33.8	0.0	33.8	65.4	1.4	18.7	28.0	149	0.00
MAY	0.0	0.0	0.0	0.0	0.0	0.0	0.0	0.0	4.6	0.4	0.0	0.0	5.0	0.0	0.0	0.0	34.9	0.0	34.9	72.8	5.7	49.0	41.4	209	0.00
JUN	0.0	0.0	0.0	0.0	0.0	0.0	0.0	0.0	1.5	4.3	0.0	0.5	6.3	0.0	0.0	0.0	33.8	0.0	33.8	66.5	3.2	45.9	38.3	194	0.00
JUL	0.0	0.0	0.0	0.0	0.0	0.0	0.0	0.0	1.1	0.0	0.0	0.5	1.6	0.0	0.0	0.0	34.9	0.0	34.9	46.1	0.3	18.6	21.9	123	0.00
AGO	0.0	0.0	0.0	0.0	0.0	0.2	0.0	0.0	4.1	5.2	0.2	0.5	10.2	0.0	0.0	0.0	17.5	13.4	30.9	63.5	13.0	42.5	77.6	238	0.00
SEP	0.0	0.0	0.0	0.0	0.0	0.2	0.0	0.0	4.4	15.1	0.3	4.9	24.9	0.0	0.0	0.0	33.8	0.0	33.8	60.8	9.8	47.3	66.9	243	0.00
OCT	0.0	0.0	0.0	0.0	0.0	0.2	0.0	0.0	4.6	5.0	0.3	0.5	10.7	0.0	0.0	0.0	34.9	0.0	34.9	64.6	17.0	43.6	78.8	250	0.00
NOV	0.0	0.0	0.0	0.0	0.0	0.0	0.0	0.0	0.1	0.4	0.0	0.0	0.6	0.0	0.0	0.0	33.8	0.0	33.8	77.1	5.8	19.4	26.8	163	0.00
DIC	0.0	0.0	0.0	0.0	0.0	0.0	0.0	0.0	0.1	0.0	0.0	0.0	0.1	0.0	0.0	0.0	34.9	0.0	34.9	52.6	1.6	6.6	4.8	101	0.00
TOTAL	0.0	0.0	0.0	0.0	0.0	0.6	0.0	0.0	22.6	30.9	0.9	7.0	62.0	0.0	0.0	0.0	358.6	49.5	408.2	665.8	64.4	333.9	448.1	1,982.4	0.0

diciembre 18, 2019

